

12 February 2013
Blackstone Valley Tourism Council

PAWTUCKET DOWNTOWN DESIGN PLAN - EXTENSION PROJECT

CHOCOLATE MILL GATEWAY

PAWTUCKET DOWNTOWN DESIGN PLAN - EXTENSION PROJECT

CHOCOLATE MILL GATEWAY

GLA, a division of BETA Group, Inc.
Thurlow Small Architecture

February 2013

February 12, 2013
Pawtucket and Central Falls,
Rhode Island

Since March 2012, with a grant from the Pawtucket Citizens Development Corporation, the Sustainable Tourism Planning and Development Laboratory (a program of the Blackstone Valley Tourism Council) led a diverse group of organizations, in both public and private sectors, for the purpose of visualizing the design possibilities within the area known as the Chocolate Mill Gateway. The Chocolate Mill Gateway surrounds the Chocolate Mill Overlook. This Gateway includes the land and buildings along Roosevelt Avenue in Pawtucket and Central Falls that is bordered by the Blackstone River to the west and Interstate 95 to the east.

The attached materials are a result of several meetings that were designed to “inspire and dream big” to provide visual elements and cues to the Gateway. They are not intended to display specific actions that will occur.

The individuals and organizations participating have offered their thoughts and ideas on the redevelopment of the Gateway. The document is intended for reference and conversation, and does not display detailed plans. The next step in the Chocolate Mill Gateway project will be the responsibility of the respective building owners, and governmental and non-governmental organizations.

We appreciate all of the time and effort that both city governments, the business sector, and our non-profit partners lent to our success.

James Toomey, Manager
Sustainable Tourism Laboratory
Blackstone Valley Tourism Council

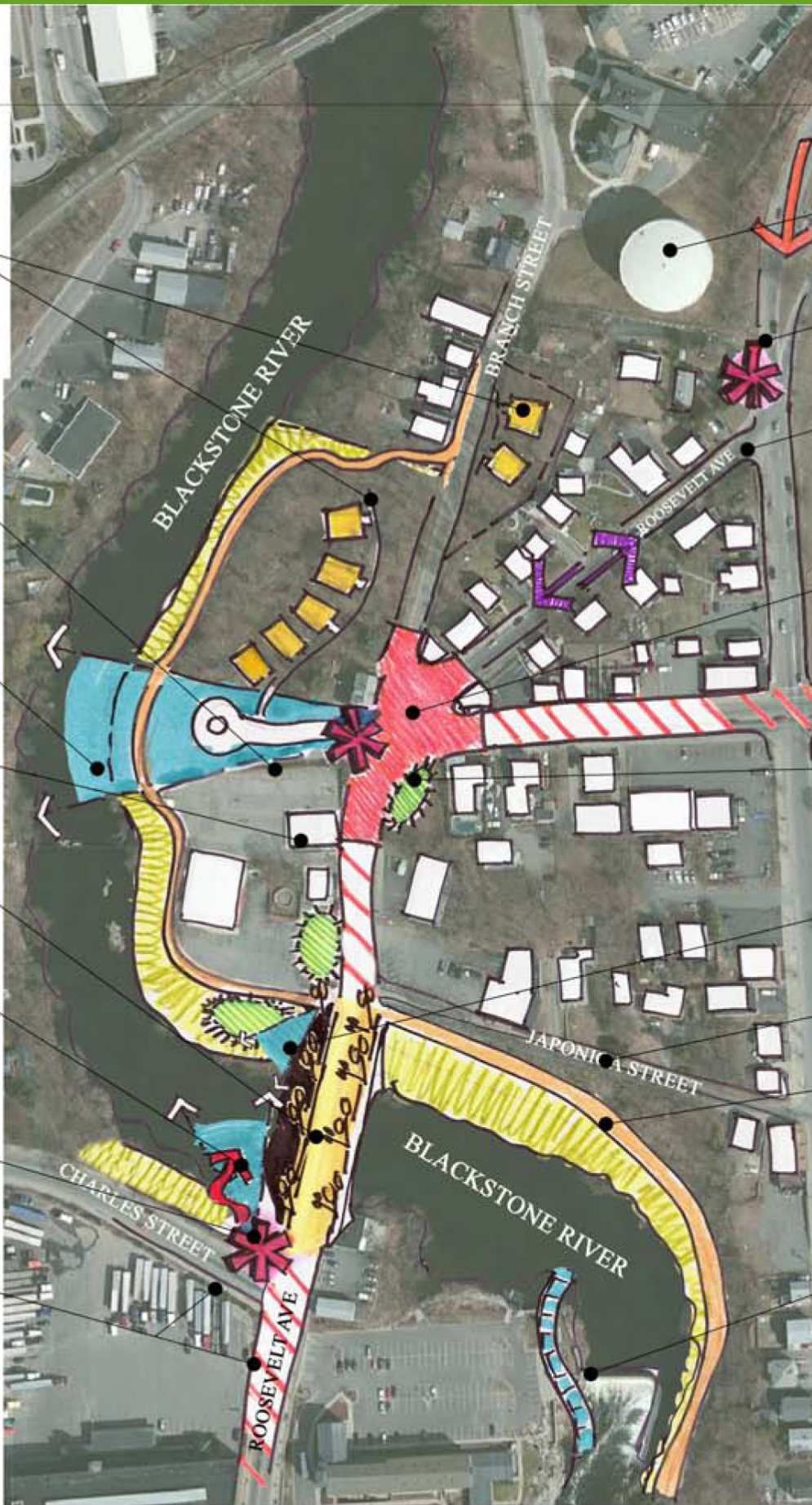


BLACKSTONE RIVER VALLEY
National Heritage Corridor, Inc.





- REMOVE AND RELOCATE SALT PILE
- FUTURE DEVELOPMENT, BIKE PATH ACCESS FROM RIVER TO BRANCH STREET
- IMPROVED ACCESS TO FUTURE DEVELOPMENT PROJECT AND RIVER OVERLOOK AND TRAIL HEAD
- RIVER VISTA, REMOVE INVASIVE PLANT MATERIAL AND TRIM LOWER BRANCHES OF TREES.
- WITH DOCK & LANDING
- INVESTIGATE ENTIRE SITE FOR POTENTIAL MIXED USE DEVELOPMENT THAT 'CONNECTS' TO THE RIVER
- RE-LAMP BRIDGE WITH HISTORIC FIXTURES
- ARCHWAY LIGHTING
- RIVER VISTA (COMPLETED SPRING 2012)
- CHOCOLATE MILL OVERLOOK AND RIVER ACCESS (COMPLETED SPRING 2012)
- COMPLETE GATEWAY ELEMENTS AT CORNER, MOVE FENCE BACK FOR IMPROVED VISIBILITY.



A project of the Blackstone Valley Tourism Council Inc.

Roosevelt Ave. - Chocolate Mill Gateway

Pawtucket / Central Falls, RI

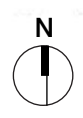
December ~ 2012

Prepared By:
GLA - A Division of BETA



- WATER TOWER 'WELCOME MURAL' OPPORTUNITY
- GATEWAY SIGNAGE/SCULPTURE (FROM NORTH)
- TWO-WAY ON ROOSEVELT PLACE'
- INCREASED SIGNAGE/ BIKE STRIPING TO ORIENT USERS TOWARDS THE SOUTH ATTLEBORO MBTA
- SEE SHEET 2 FOR CIRCULATION RECONFIGURATION
- GATEWAY SIGNAGE (FROM SOUTH)
- ENHANCEMENT OPPORTUNITIES FOR RIVER VISTA AND STREETScape IMPROVEMENTS
- ✓ ROUTE 95 SIGNAGE AND IMPROVEMENTS TO JAPONICA STREET
- PROPOSED BIKEWAY
- FISH PASSAGE WITH LADDER
- LONG RANGE PROJECTS
- SHORT RANGE PROJECTS
- ✓ COMPLETED PROJECTS
- ROOSEVELT ENTRY CORRIDOR

Aerial with Possible Improvements



CHOCOLATE MILL GATEWAY



PROPOSED BIKEWAY

PROPOSED RIVER ACCESS / DOCK

PROPOSED PCDC DEVELOPMENT SITE

HIGHWAY TRAFFIC INTENDED TO REMAIN ON MIDDLE STREET

PROPOSED TWO-WAY CONVERSION

FOUR-WAY STOP

PROPOSED ON STREET PARKING

POTENTIAL MIXED-USE DEVELOPMENT

BLACKSTONE RIVER

NEW PARK

- DEVELOPMENT FUTURE POTENTIAL
- EXISTING DEVELOPMENT
- FOOTPRINT OF EXISTING BUILDINGS TO BE REMOVED. OCCUPANTS TO REMAIN ON SITE.



